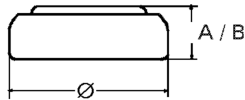


Data Sheet

Type Number 20389
Designation IEC SR1130W (SR54)
System Silver oxide / Zinc /
 KOH - Electrolyte



Nominal Voltage 1,55 V
Typical Capacity C 60 mAh
 Load 5.6 kOhm, at 20°C down to 1.2 V

Weight (approx.) 1,31 g
Volume 0,28 ccm
Coding Date of Manufacturing
 Month / Year

Temperature Ranges	min	max.
Storage	0°C	60°C
Discharge	0°C	60°C

Dimensions	min	max.
Diameter (Ø).....	11,40	11,60
Height (A/B)	2,80	3,10

Segment Watch / High Drain

Main Applications Watch
 Photo
 Electronic

Typical Capacities (at 20°C)

Discharge Type	Load	End Voltage:	1.2 V
Continuous 24h/d, 7d/w Current [µA]:	5600 Ω 275	Time:	219 h
		Capacity [mAh]:	60
		Energy [mWh]:	93