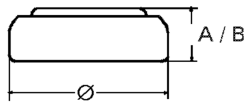


Data Sheet

Type Number 20379
Designation IEC SR521SW (SR 63)
System Silver oxide / Zinc /
 NaOH - Electrolyte



Nominal Voltage 1,55 V
Typical Capacity C 16 mAh
 Load 68,1 kOhm, at 20°C down to 1.2 V

Weight (approx.) 0,23 g
Volume 0,06 ccm
Coding..... Date of Manufacturing
 Month / Year

Temperature Ranges	min	max.
Storage	-10°C	65°C
Discharge	-10°C	65°C

Dimensions	min	max.
Diameter (Ø).....	5,7	5,8
Height A/(B)	2,0	2,15

Segment Watch

Typical Capacities (at 20°C)

Discharge Type	Load	End Voltage: 1.2 V
Continuous 24h/d,7d/w Current [µA]:	68100 Ω 23	Time: 697 h
		Capacity [mAh]: 16
		Energy [mWh]: 25