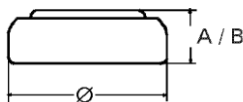


### Data Sheet

**Type Number** ..... 30371  
**Designation IEC** ..... SR 69  
**System** ..... Silver oxide / Zinc /  
 KOH - Electrolyte



**Nominal Voltage** ..... 1,55 V  
**Typical Capacity C** ..... 42 mAh  
 Load 20 kOhm, at 20°C down to 1.2 V

**Weight (approx.)** ..... 0,61 g  
**Volume** ..... 0,14 ccm  
**Coding**..... Date of Manufacturing  
 Month / Year

<b>Temperature Ranges</b>	min	max.
Storage .....	-10°C	65°C
Discharge .....	-10°C	65°C

<b>Dimensions</b>	min	max.
Diameter (Ø).....	9,25	9,5
Height (A/B) .....	1,85	2,1

**Segment** ..... Watch

### Typical Capacities (at 20°C)

Discharge Type	Load	End Voltage:	1.2 V
Continuous 24h/d,7d/w	20000 Ω	Time:	530 h
		Capacity [mAh]:	42
		Energy [mWh]:	65

All Data contained herein is for single cells

For battery applications, performance data may vary from single cell data, depending on specific battery configuration