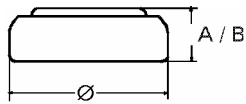


Data Sheet

Type Number 20370
Designation IEC SR 69
System Silver oxide / Zinc /
 KOH - Electrolyte



Nominal Voltage 1,55 V
Typical Capacity C 34 mAh
 Load 20 kOhm, at 20°C down to 1.2 V

Weight (approx.) 0,6 g
Volume 0,14 ccm
Coding..... Date of Manufacturing
 Month/Year

Temperature Ranges
 Storage min max.
 -10°C 65°C
 Discharge -10°C 65°C

Dimensions
 Diameter (Ø)..... min max.
 9,3 9,5
 Height (A/B) 1,8 2,1

Segment Watch / High Drain

Main Applications Watch
 Electronic

Typical Capacities (at 20°C)

Discharge Type	Load	End Voltage:	1.2 V
Continuous	20000 Ω	Time:	430 h
24h/d,7d/w		Capacity [mAh]:	34
Current [µA]:	78	Energy [mWh]:	54