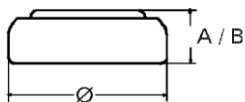


Data Sheet

Type Number 20341
Designation IEC SR 714 SW
System Silver oxide / Zinc /
 Alkaline - Electrolyte



Nominal Voltage 1,55 V
Typical Capacity C 15 mAh
 Load 68,1 kOhm, at 20°C down to 1.2 V

Weight (approx.) 0,28 g
Volume 0,07 ccm
Coding..... Date of Manufacturing
 Month / Year

Temperature Ranges min max.
 Storage 0°C 60°C
 Discharge 0°C 60°C

Dimensions min max.
 Diameter (Ø)..... 7,75 7,90
 Height (A/B) 1,3 1,45

Segment Watch

Main Applications Watch
 Photo
 Electronic Devices

Typical Capacities (at 20°C)

Discharge Type	Load	End Voltage:	1.2 V
Continuous 24h/d,7d/w Current [µA]:	68100 Ω 23	Time:	650 h
		Capacity [mAh]:	15
		Energy [mWh]:	23,5