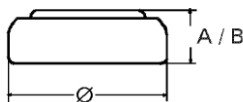


Data Sheet

Type Number 20335
Designation IEC SR 512 SW
System Silver oxide / Zinc /
 NaOH - Electrolyte



Nominal Voltage 1,55 V
Typical Capacity C 6 mAh
 Load 68,1 kOhm, at 20°C down to 1.2 V

Weight (approx.) 0,15 g
Volume 0,03 ccm
Coding..... Date of Manufacturing
 Month / Year

Temperature Ranges min max.
 Storage -10°C 65°C
 Discharge -10°C 65°C

Dimensions min max.
 Diameter (Ø)..... 5,65 5,80
 Height (A/B) 1,05 1,25

Segment Watch

Main Applications Watch
 Electronic

Typical Capacities (at 20°C)

Discharge Type	Load	End Voltage:	1.2 V
Continuous 24h/d,7d/w Current [µA]:	68100 Ω 23	Time:	272 h
		Capacity [mAh]:	6
		Energy [mWh]:	10

All Data contained herein is for single cells

For battery applications, performance data may vary from single cell data, depending on specific battery configuration

VARTA Microbattery GmbH, Daimlerstr. 1, D-73479 Ellwangen/Jagst
 Tel.: (+49) 7961/921-0, Telefax: (+49) 7961/921-553

Subject to change without prior notice!

Date of issue: 2012-04-12