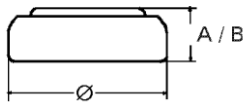


Data Sheet

Type Number 20319
Designation IEC SR 527 SW
System Silver oxide / Zinc / NaOH



Nominal Voltage 1,55 V
Typical Capacity C 21 mAh
 Load 47 kOhm, at 20°C down to 1.2 V

Weight (approx.) 0,29 g
Volume 0,07 ccm
Coding..... Date of Manufacturing
 Month / Year

Temperature Ranges min max.
 Storage -10°C 60°C
 Discharge -10°C 60°C

Dimensions min max.
 Diameter (Ø)..... 5,65 5,80
 Height (A/B) 2,50 2,70

Segment Watch

Main Applications Watch
 Photo
 Electronic

Typical Capacities (at 20°C)

Discharge Type	Load	End Voltage:	1.2V
Continuous 24h/d,7d/	68100 Ω	Time:	569 h